

FULLY AUTOMATIC

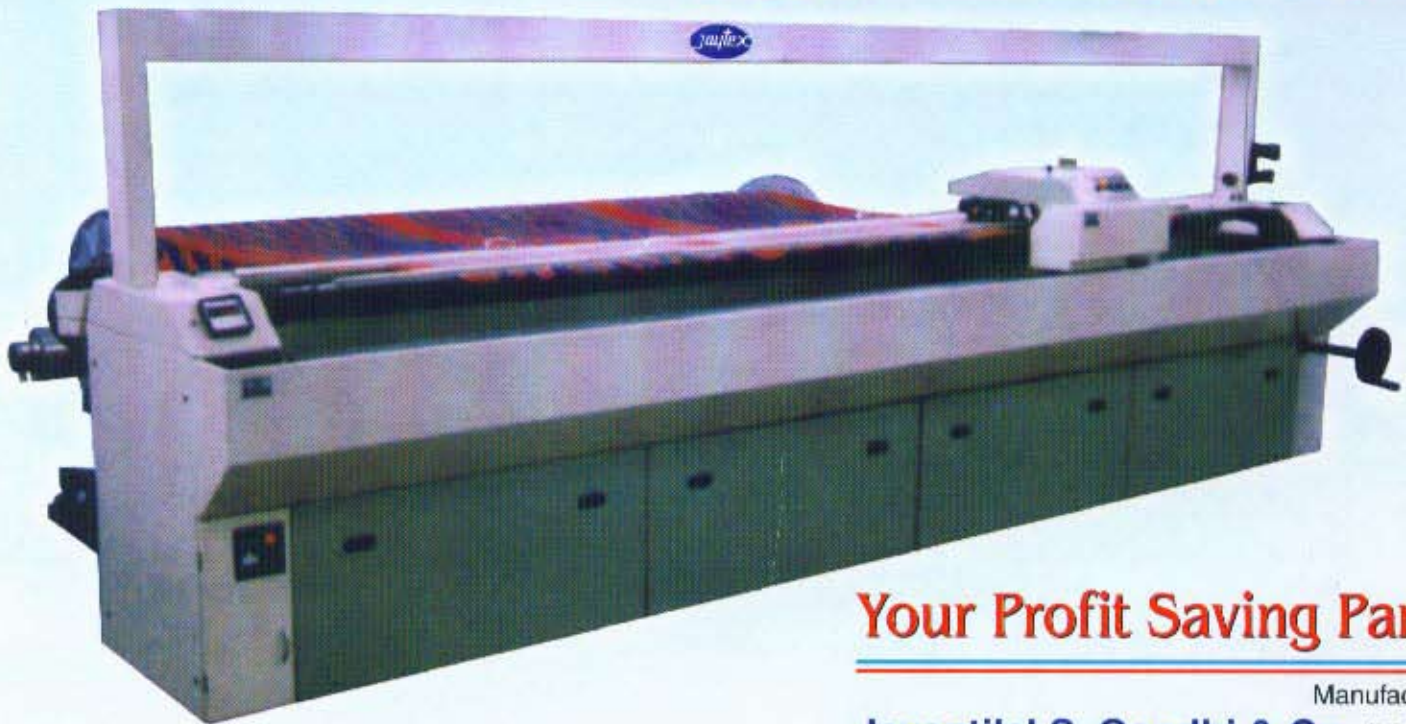
Warp



Leasing-In Machine



100% Indigenous
Guarantee for Spares, Service & Economy



Your Profit Saving Partner

Manufactured by :

Jyantilal S. Gandhi & Co. (Mach.Div.)

408, 'Sampada' Near Shree Mali Society,
Mithakhali Six Roads, Navrangpura, Ahmedabad-380 009.

Ph.26427213,26423312,26564614 • Fax : (079)26563813

Gram : Jaytex • E-mail : jaytexindia@hotmail.com

Visit us : www.jaytexindia.com

FULLY AUTOMATIC

Warp

Leasing-In Machine



INTRODUCTION :

"JAYTEX" name is not new to you. The company is mainly engaged in developing Weaving Preparatory equipment since 1964.

The prime products of this company are

JAYTEX WARP TYING EQUIPMENT

JAYTEX WARP REACHING-IN-EQUIPMENT

We believe in developing 100% Indigenous products against import substitution. **JAYTEX** being Pioneer's in above two products, takes pride in adding a feather in their cap by being pioneers in developing 100% Indigenous. "**WARP LEASING-IN MACHINE**" a product against total import substitution.

Following are the features, which will explain, how **JAYTEX** warp Leasing-in-Machine is viable and the best deal for you.

A UNIQUE BLEND OF TECHNOLOGY & EXPERIENCE OF MORE THEN 200 MACHINES

100% INDIGENOUS :

It is the guarantee for service spares and economy. All components including electricals, are developed and made at our works. We guarantee you prompt expert service and spares.

WARP LEASING IN MACHINE :

One of the most important stages in the preparation of warps for weaving is the insertion of the lease. This process establishes the warp ends in the sequence prescribed by the warper or beamer. It is especially important to have the correct sequence in densely set of patterned warps, as well as in warps containing fine yarns, such as synthetics, filament or worsted yarns. Thread crossings in the back part of the shed, produce variations in thread within the warps, this tension variations can cause Warp-way shade, streakiness, stripes etc. The lease usually 1:1 facilitates the division of the warp ends by hand, or by drawing-in-machine, or by warp tying. Warp ends divided or drawn-in, in the incorrect sequence can cause warp fluffiness and breaks and consequently weaving machine downtime. Faults can occur in the fabric, design of patterned warps.

ADVANTAGES :

By using **JAYTEX** universal warp Leasing-in-machine the preparatory process in your weaving will become highly rationalised, all type of sized warps can be automatically and correctly leased at a high speed. Leasing each and every warp end means arresting them in their original position, and not allowing them to migrate.

When warp leased by this machine are tied by **JAYTEX** lease to lease warp typing or drawn by **JAYTEX** J-II leased warp Reaching-in-machine, they never cross or tangle during the process of weaving, even if they are filament or cotton, or highly densed warp per inch.

IMPROVEMENTS :

- ✦ Consequently it improves.
- ✦ Even tensioning to each warp over the entire width.
- ✦ Reduction in fluffiness in the warps.
- ✦ Reduces end breakages during weaving.
- ✦ Frequent loom stoppage is reduced.
- ✦ Improves the quality of woven products.
- ✦ Rationalising the preparatory process.
- ✦ A MUST FOR HIGH-SPEED AND JET LOOMS.
- ✦ A BOON TO THE FILAMENT SINGLE END SIZERS AND WEAVERS.

APPLICATION :

Practically all type of warps, which are sized, or wound on the weaver's beam can be leased. The special selecting device can select any kind of yarn such as twisted, untwisted, chemical, synthetics, silk, cotton, filament staple fiber etc.

CONSTRUCTION :

The entire frame structure is fabricated from graded seamless pipes, angles and castings. It is totally enclosed to prevent dust and fluff. Yarn clamping system is simplified for quick and un-skilled dressing. Every parts of the machine is made of highly finished special steel, for high durability with perfection.

PRODUCTION & PERFORMANCE :

HIGH PRODUCTIVITY AT LOW LABOUR COST.
REDUCES WAGE BILL TO A VERY LARGE EXTENT.

Only one person can lease the full production of one sizing machine. (i.e. 8/10 - Beams per shift)



Warp Leasing-In Machine

CHARACTERISTICS

FULLY AUTOMATIC

The machine can be left alone during operation.
When the leasing work is over, it will automatically stop.

PERFECT SELECTION

Sensitive selector system is provided to prevent double ends.
The feeder of the carriage is connected to the sensitive feeler, so that the carriage moves according to the density of warps.

VARIABLE SPEED

With adjustment provision, according to your warp, type, count and condition you can set the speed from 50 ends to 250 ends per minute.
Electronic digital counter meter records precise number of picked lease.

LEASE

2 - ends : Cotton blends.
(One up - One down)

DN	UP	DN	UP	DN	UP	DN	UP
UP	DN	UP	DN	UP	DN	UP	DN
DN	UP	DN	UP	DN	UP	DN	UP

3 - ends : Chemical, Synthetic Silk,
(One up - One down - One up)

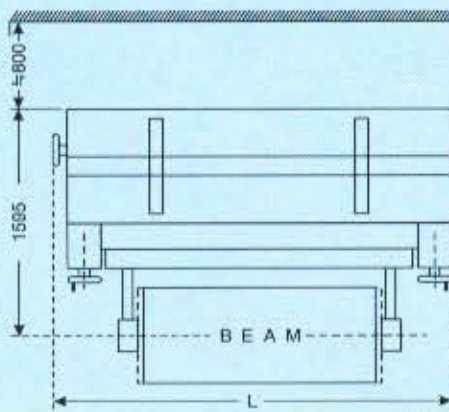
SPECIFICATIONS

WIDTHS

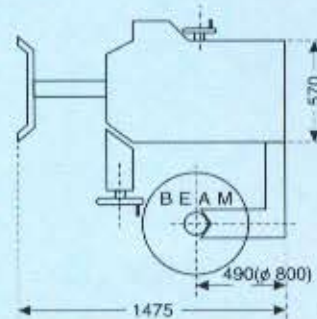
MEASURES

ELECTRICALS

Over all	3192	3712	4208	Special
R.S. Width	1905 (75")	2413 (95")	2921 (115")	as per your
N. Weight :	700 kgs.	890 kgs.	1075 kgs.	Order
Packings :				
A.C., Single Phase, 110-Volts Servo Motor with variable speed. Voltage controller & flourescent lighting arrangement.				



FLOOR SPACING



SALES & SERVICE NETWORK

Gujarat : JAYTEX CORPORATION Ahmedabad

Phone : (079) 6427213, 6423312, 6564614 Fax : 6563813 E-mail : jaytex@wilnetonline.net

Visit us : www.jaytexindia.com

Maharashtra : PARK BROTHERS Mumbai

Phone : (022) 5432518 Fax : 5447888 E-mail : parkbrot@bom8.vsnl.net.in

South : ORBIT TEXTILES ENG. P. LTD. Coimbatore

Phone : (0422) 303451 Telefax : 303499, 530039 E-mail : orbittex@satyam.net.in

North : SPINTEX PVT. LTD. Delhi

Phone : (011) 5931184, 5930020, 5930537 Fax : 5450030 E-mail : spintexpvtltd@tatanova.com

Rajasthan : KUMAR & CO. Bhilwara

Phone : (01482) 21111 (Mobile) 9829047855 E-mail : kumarsulzer@rediffmail.com